

Subaru Lease Wear & Tear Guide

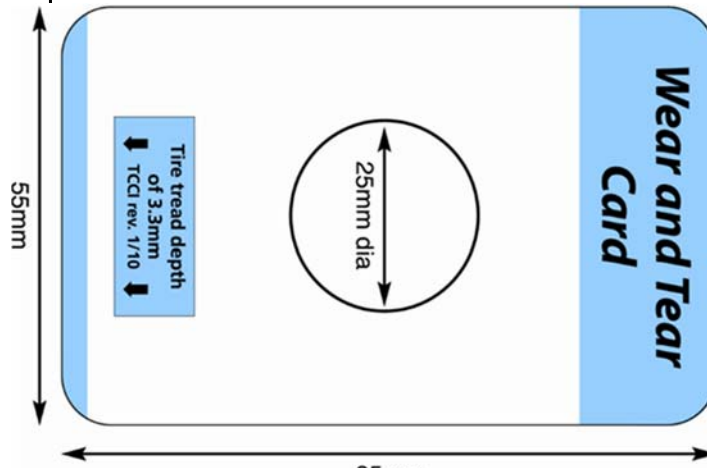


Type of Damage	SFS Guideline	SFS Charge (plus applicable taxes)
Exterior body panels including bumpers		
Scratch, scrape, ding, dent, gouge or crack	Within the card (see card sample) and where rust and/or bare metal is NOT exposed	No Charge
Scratch, scrape, ding, dent, gouge or crack	Within the card with rust present or bare metal/bumper material exposed	\$200 each panel
Scratch, scrape, ding, dent, gouge or crack	Exceeding the card	\$400 each panel
Unacceptable previous repaint and/or repair	Any damage not repaired to body shop industry standards	\$200 per panel if within the card \$400 per panel if exceeds the card
Decal/Lettering not removed, or removed with residual damage present	All decals/lettering must be removed prior to returning the vehicle	\$100 per body or glass panel
Hail or Collision1*	Any damage	Repair to body shop industry standards
Glass		
Scratch	Within the card	No Charge
Chip, Star/Bullseye or crack	Completely within the card circle	\$100 each. If 4 or more, replace glass panel, or charge as per Categories below:
Scratch	Exceeding the card	All Subaru Models: \$600 for replacement of non-heated windshield \$700 for replacement of heated windshield \$300 for replacement of any side panel glass
Chip, Star/Bullseye or crack	Any larger than the card circle	
Tires, wheels and wheel covers		
Missing or broken wheel cover Bent or damaged non-alloy wheel	If replaced, must be comparable to the original manufacturers part	\$90 each
Tire tread depth less than 3.3 millimetres at the lowest point on the tread surface (includes full size spare tire) **Remolded tires are not acceptable**	Must be a matching set (Brand/size/speed rating) of four tires as specified by Subaru Canada for the vehicle	For all Subaru models: 16" Tires \$200 each 17" Tires \$250 each 18" Tires \$300 each
Scratched or gouged alloy wheel	Exceeding the card that CAN be repaired Exceeding the card that CANNOT be repaired	\$150 per wheel Cost to replace wheel
Missing alloy wheel	Any	\$750 per wheel
IMPORTANT NOTICE: Vehicles returned with winter tires between May 1 st and October 31 st are subject to above charges		
Interior Upholstery and Trim		
One cut, tear, stain or burn hole per vehicle	Within the card circle	No Charge
Any additional cut, tear or burn hole	Any size	\$100 each
Any additional stain	Any size	\$200
Miscellaneous Items		
Keys, remote fobs and owner's manual	All keys, remote fobs and manuals must be returned with the vehicle	\$150 for each Immobilizer chipped key \$175 for each combined key/remote \$250 for each remote fob \$50 Subaru Owner's Manual
Any missing or broken item (e.g.: cargo/tonneau cover, seat headrests, etc.).	Includes, but not limited to, all electrical or mechanical components, parts and accessories	Cost to replace or repair
IMPORTANT NOTICE: All warning lights must be repaired prior to returning the vehicle (e.g.: Check Engine, 'ABS', 'VSC', 'TRAC', etc.)		

Definition and notes:

1* Any damage exceeding 30 cm in length/diameter is considered "Collision"

Card Sample:



Card size not exactly as shown. See your dealer for exact measurements.